

BUSINESS & ECONOMICS LIBRARY

Year Built: 1964
 Architect: Moore and Hutchins
 Renovated: 2005, 2007, 2010, 2011, 2013
 Library Levels: Level 1, Level 1 Mezzanine, Level 2 Mezzanine
 Entry Level: Level 1
 Primary Library Users:
 • Business; Engineering & Applied Sciences; Continuing Education
 Other Major Occupants in Building:
 • Graduate School of Business



The exterior of Uris Hall

Services and Collections

- Business databases and electronic resources
- Bloomberg Terminals
- Disclosure microfiche
- Historical corporate annual reports
- Scudder Collection

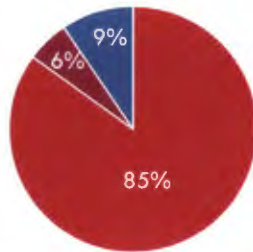
Architectural Characteristics

- Large, semi-circular, double-height space, with necklace of smaller rooms around the perimeter
- Mezzanine space that overlooks double-height space

Space Allocation

29,207 NASF / 5.5% of TOTAL CUL-IS SPACE

- Patron Non-Stack: 24,826 NASF
- Patron Stack: 1,627 NASF
- Staff Non-Stack: 2,754 NASF
- Staff Stack: 0 NASF
- Inactive: 0 NASF



PATRON SPACE TYPE DISTRIBUTION (Non-stack and Stack)

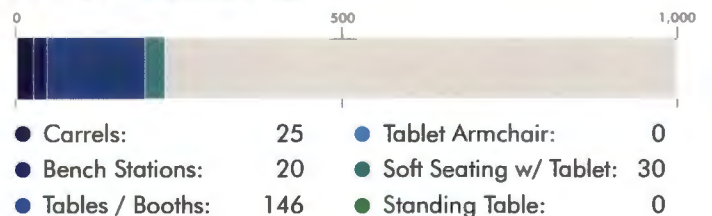
Classroom:	0 NASF
Open Laboratory:	0 NASF
Study Room:	6,508 NASF
Study Room - Group - Scheduled:	3,846 NASF
Study Room - Group - Presentation Practice:	0 NASF
Study Room - Group - Unscheduled:	12,654 NASF
Study Room - Monitored Reading Room:	0 NASF
Stack:	1,627 NASF
Open-Stack Study Room:	0 NASF
Study Service:	1,404 NASF
Exhibition:	0 NASF
Lounge:	0 NASF
Merchandising:	0 NASF
Meeting Room:	0 NASF
Lobby:	414 NASF
Public Corridor:	0 NASF

Patron Seat & Work Surface Allocation

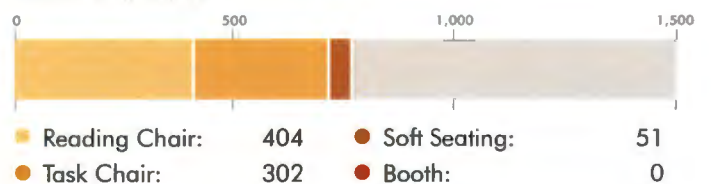
757 PATRON SEATS / 18.5% of TOTAL CUL-IS PATRON SEATS



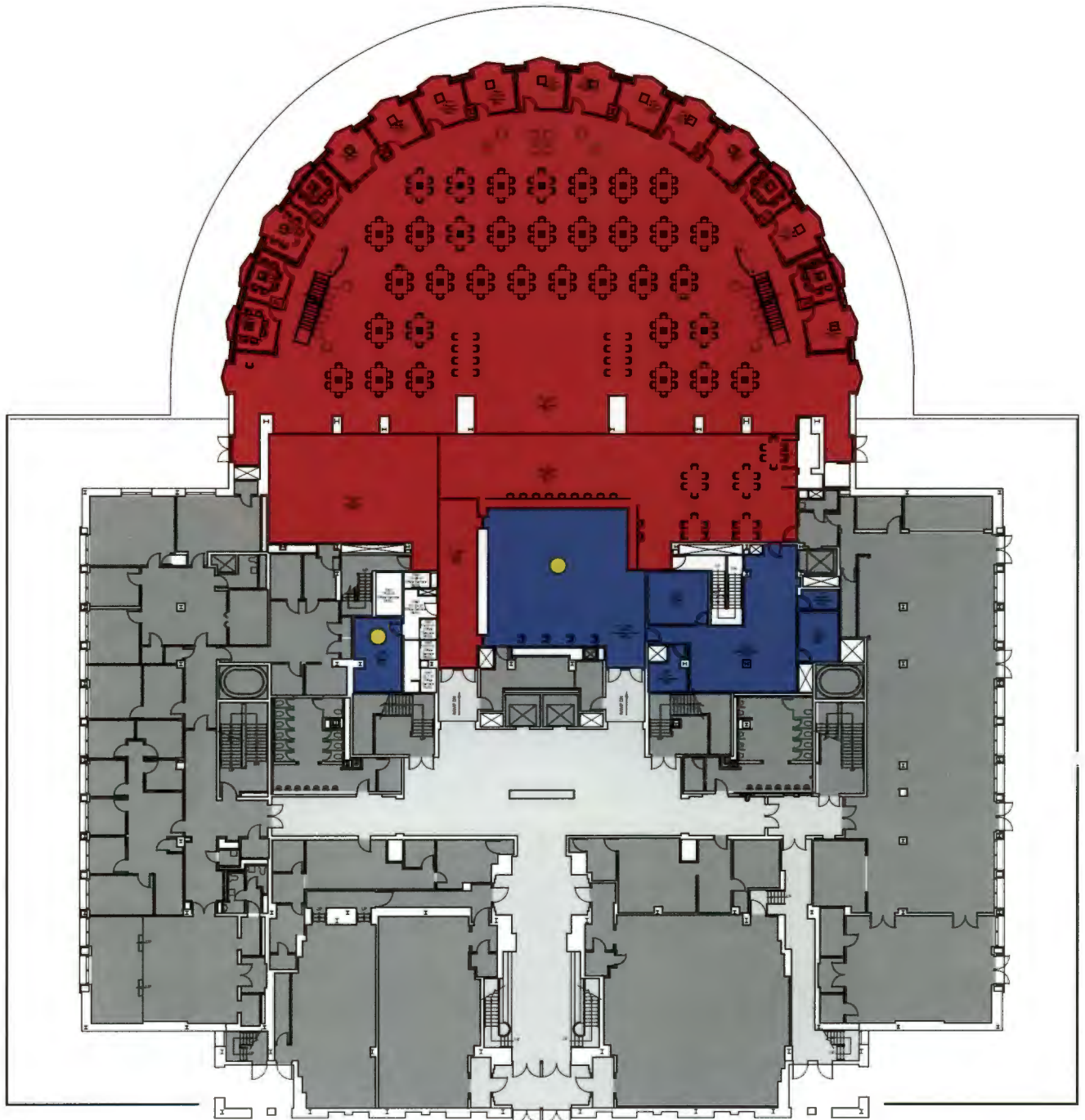
TYPES OF WORK SURFACES



TYPES OF SEATING

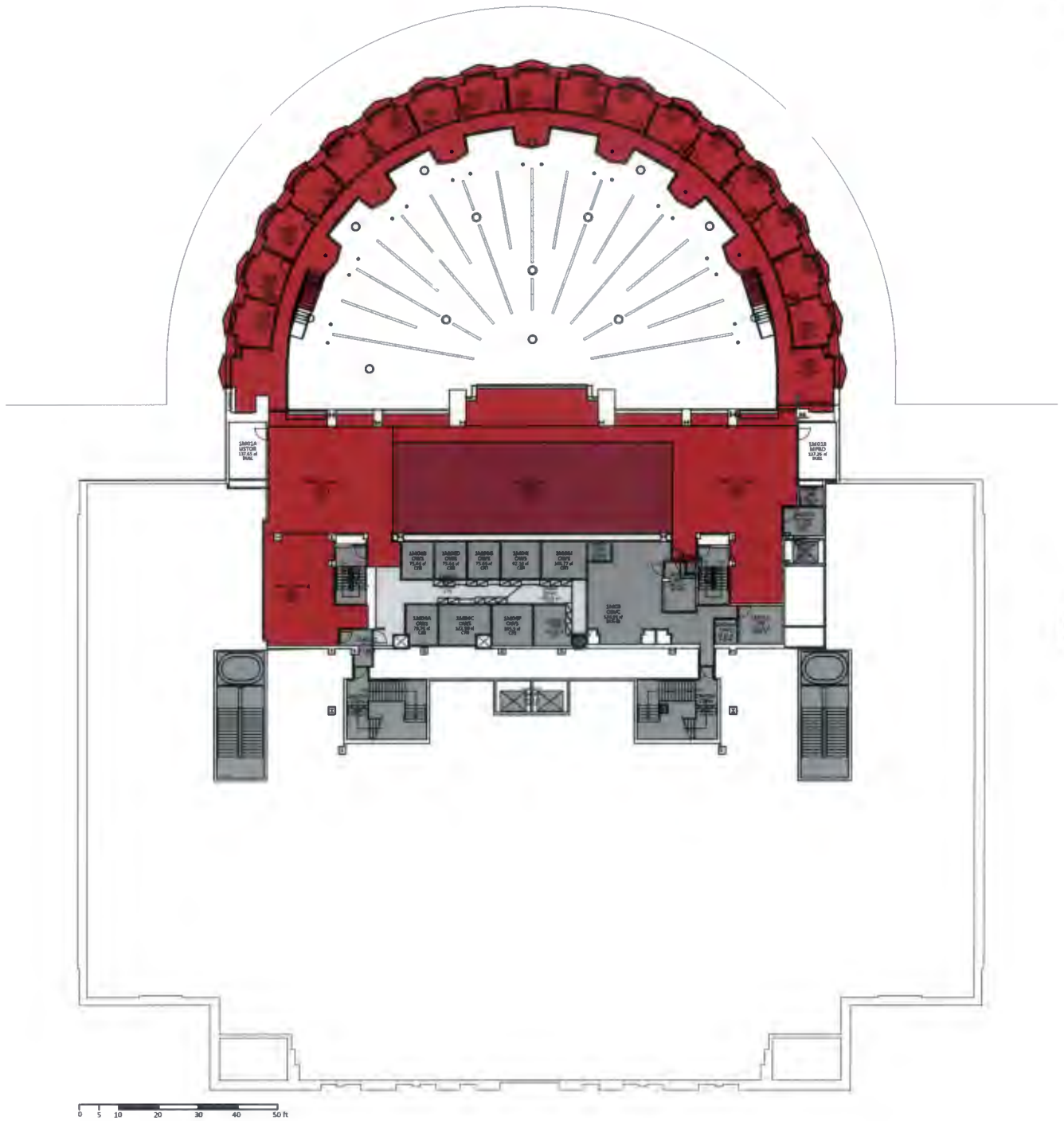


Floor Plan | 100 Level



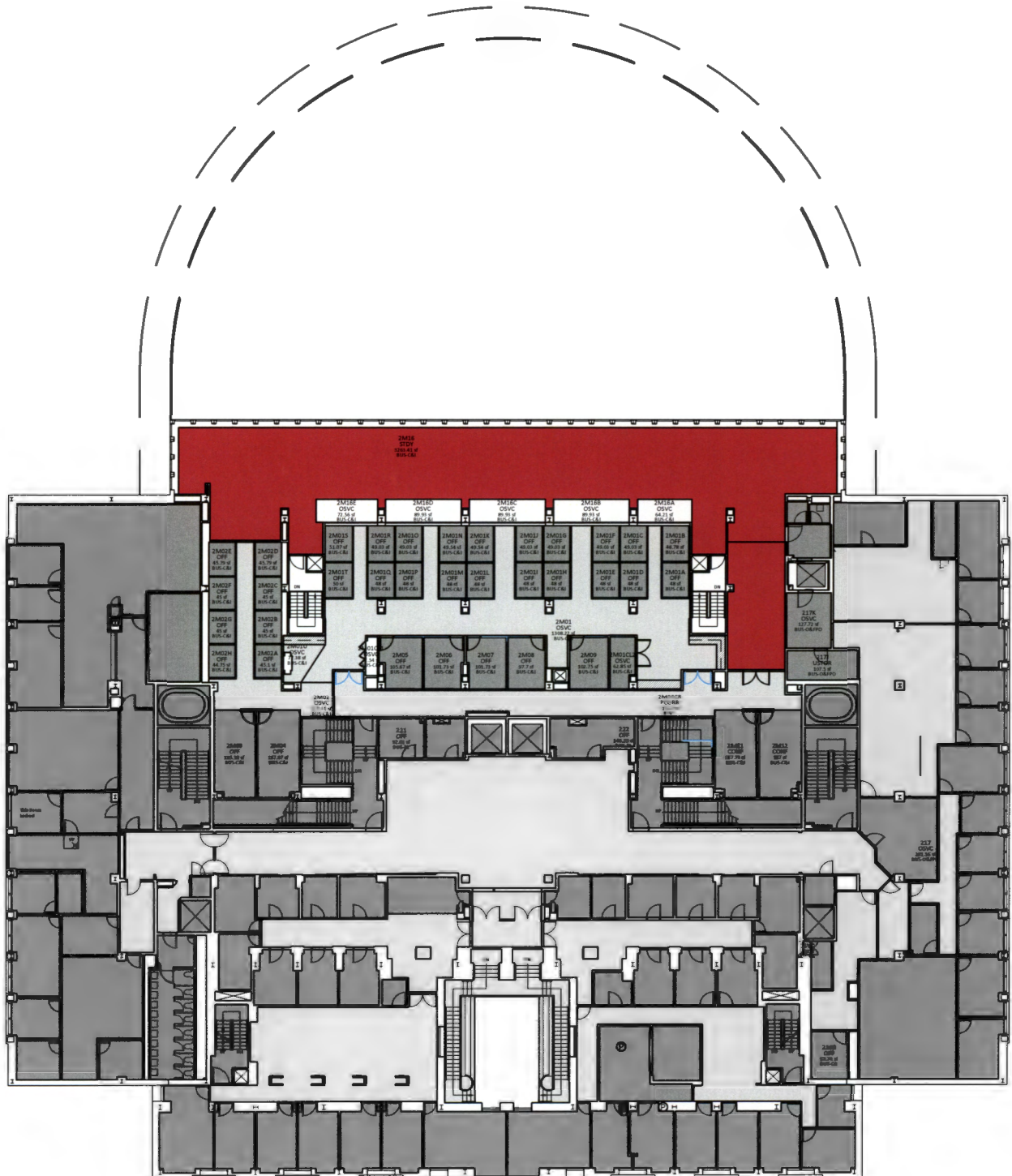
- Non-Library
- Patron Non-Stack
- Staff Non-Stack
- Inactive
- ▲ Entrance to Library
- Non-Library - Circulation
- Patron Stack
- Staff Stack
- Service Point

Floor Plan | 100 Mezzanine Level



- Non-Library
- Non-Library - Circulation
- Patron Non-Stack
- Patron Stack
- Staff Non-Stack
- Staff Stack
- Inactive
- ▲ Entrance to Library
- Service Point

Floor Plan | 200 Mezzanine Level



- Non-Library
- Non-Library - Circulation
- Patron Non-Stack
- Patron Stack
- Staff Non-Stack
- Staff Stack
- Inactive
- Service Point
- Entrance to Library

INDEX OF ROOMS

	Library	Building	Floor	Room Number	PE Space Classification as per Survey	PE Space Classification as per Survey _ Use Group	NASF
1	Business & Economics Library	Uris	1	107	440 Processing Room	Staff	738
2	Business & Economics Library	Uris	1	107A	310 Office	Staff	198
3	Business & Economics Library	Uris	1	107B	315 Office Service	Staff	93
4	Business & Economics Library	Uris	1	107C	310 Office	Staff	128
5	Business & Economics Library	Uris	1	107D	780 Unit Storage	Staff	48
6	Business & Economics Library	Uris	1	126A	Unconfirmed Use	n/a	75
7	Business & Economics Library	Uris	1	126B	310 Office	Staff	223
8	Business & Economics Library	Uris	1	126C	Unconfirmed Use	n/a	24
9	Business & Economics Library	Uris	1	126D	Unconfirmed Use	n/a	20
10	Business & Economics Library	Uris	1	126E	Unconfirmed Use	n/a	20
11	Business & Economics Library	Uris	1	126F	Unconfirmed Use	n/a	22
12	Business & Economics Library	Uris	1	126PC	Unconfirmed Use	n/a	121
13	Business & Economics Library	Uris	1	130 - Zone 1	410E Study Room - Group - Unscheduled	Patron	9201
14	Business & Economics Library	Uris	1	130 - Zone 2	410 Study Room	Patron	1190
15	Business & Economics Library	Uris	1	130 - Zone 3	410 Study Room	Patron	2055
16	Business & Economics Library	Uris	1	130 - Zone 4	440 Processing Room	Staff	1326
17	Business & Economics Library	Uris	1	130 - Zone 5	W05 Lobby	Patron	414
18	Business & Economics Library	Uris	1	130A	410B Study Room - Group - Scheduled	Patron	121
19	Business & Economics Library	Uris	1	130B	410B Study Room - Group - Scheduled	Patron	115
20	Business & Economics Library	Uris	1	130C	410B Study Room - Group - Scheduled	Patron	119
21	Business & Economics Library	Uris	1	130D	410B Study Room - Group - Scheduled	Patron	115
22	Business & Economics Library	Uris	1	130E	410B Study Room - Group - Scheduled	Patron	115
23	Business & Economics Library	Uris	1	130F	410B Study Room - Group - Scheduled	Patron	115
24	Business & Economics Library	Uris	1	130G	410B Study Room - Group - Scheduled	Patron	116
25	Business & Economics Library	Uris	1	130H	410B Study Room - Group - Scheduled	Patron	115
26	Business & Economics Library	Uris	1	130I	410B Study Room - Group - Scheduled	Patron	118
27	Business & Economics Library	Uris	1	130J	410B Study Room - Group - Scheduled	Patron	115
28	Business & Economics Library	Uris	1	130K	410B Study Room - Group - Scheduled	Patron	116
29	Business & Economics Library	Uris	1	130L	410B Study Room - Group - Scheduled	Patron	115
30	Business & Economics Library	Uris	1	130M	410B Study Room - Group - Scheduled	Patron	117
31	Business & Economics Library	Uris	1	130N	410B Study Room - Group - Scheduled	Patron	115
32	Business & Economics Library	Uris	1	130O	410B Study Room - Group - Scheduled	Patron	119
33	Business & Economics Library	Uris	1	130P	410B Study Room - Group - Scheduled	Patron	115
34	Business & Economics Library	Uris	1	130Q	410B Study Room - Group - Scheduled	Patron	120
35	Business & Economics Library	Uris	1M	1M01 - Zone 1	420 Stack	Patron	1627
36	Business & Economics Library	Uris	1M	1M01 - Zone 2	410E Study Room - Group - Unscheduled	Patron	1862
37	Business & Economics Library	Uris	1M	1M01 - Zone 3	410E Study Room - Group - Unscheduled	Patron	1042
38	Business & Economics Library	Uris	1M	1M01 - Zone 4	410E Study Room - Group - Unscheduled	Patron	549
39	Business & Economics Library	Uris	1M	1M01A	Unconfirmed Use	n/a	138
40	Business & Economics Library	Uris	1M	1M01B	Unconfirmed Use	n/a	137
41	Business & Economics Library	Uris	1M	1M02	455 Study Service	Patron	1404
42	Business & Economics Library	Uris	1M	1M02A	410B Study Room - Group - Scheduled	Patron	113
43	Business & Economics Library	Uris	1M	1M02B	410B Study Room - Group - Scheduled	Patron	108
44	Business & Economics Library	Uris	1M	1M02C	410B Study Room - Group - Scheduled	Patron	112
45	Business & Economics Library	Uris	1M	1M02D	410B Study Room - Group - Scheduled	Patron	108
46	Business & Economics Library	Uris	1M	1M02E	410B Study Room - Group - Scheduled	Patron	110
47	Business & Economics Library	Uris	1M	1M02F	410B Study Room - Group - Scheduled	Patron	108
48	Business & Economics Library	Uris	1M	1M02G	410B Study Room - Group - Scheduled	Patron	109
49	Business & Economics Library	Uris	1M	1M02H	410B Study Room - Group - Scheduled	Patron	108
50	Business & Economics Library	Uris	1M	1M02I	410B Study Room - Group - Scheduled	Patron	111
51	Business & Economics Library	Uris	1M	1M02J	410B Study Room - Group - Scheduled	Patron	108
52	Business & Economics Library	Uris	1M	1M02K	410B Study Room - Group - Scheduled	Patron	109
53	Business & Economics Library	Uris	1M	1M02L	410B Study Room - Group - Scheduled	Patron	108
54	Business & Economics Library	Uris	1M	1M02M	410B Study Room - Group - Scheduled	Patron	110
55	Business & Economics Library	Uris	1M	1M02N	410B Study Room - Group - Scheduled	Patron	108
56	Business & Economics Library	Uris	1M	1M02O	410B Study Room - Group - Scheduled	Patron	112
57	Business & Economics Library	Uris	1M	1M02P	410B Study Room - Group - Scheduled	Patron	108
58	Business & Economics Library	Uris	1M	1M02Q	410B Study Room - Group - Scheduled	Patron	115
59	Business & Economics Library	Uris	2M	2M16	410 Study Room	Patron	2885